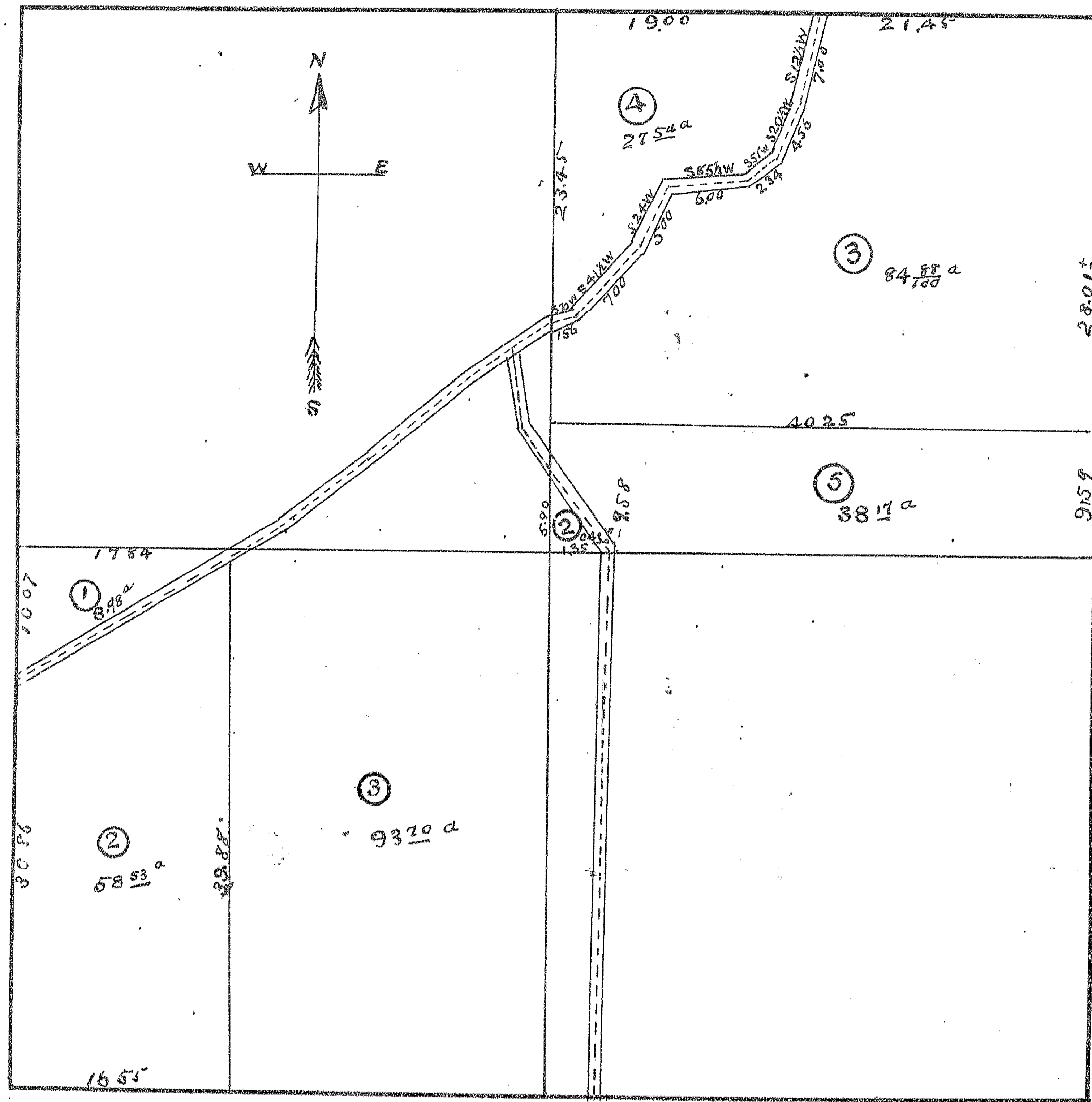


# REVENUE PLAT 1904

OF

A RESUBDIVISION OF THE N. E. AND S. W. QUARTERS  
OF SECTION 5 T 10 N R 2 E ORANGE T. P. KNOX CO. ILL.



STATE OF ILLINOIS, }  
 Knox County, } ss. I, C. S. RICHEY, County Surveyor of said Knox County, do hereby certify that  
 the foregoing and annexed is a true and correct Plat and description of Lands advertised for Survey and Platting  
 by the County Clerk, as taken from the records of Knox County, and by measurements and survey, as provided for  
 in Sections 62 and 63, Chapter 120, Revised Statutes of Illinois, 1903.  
 Dated this 29th day of March, 1904.

C. S. RICHEY, County Surveyor.

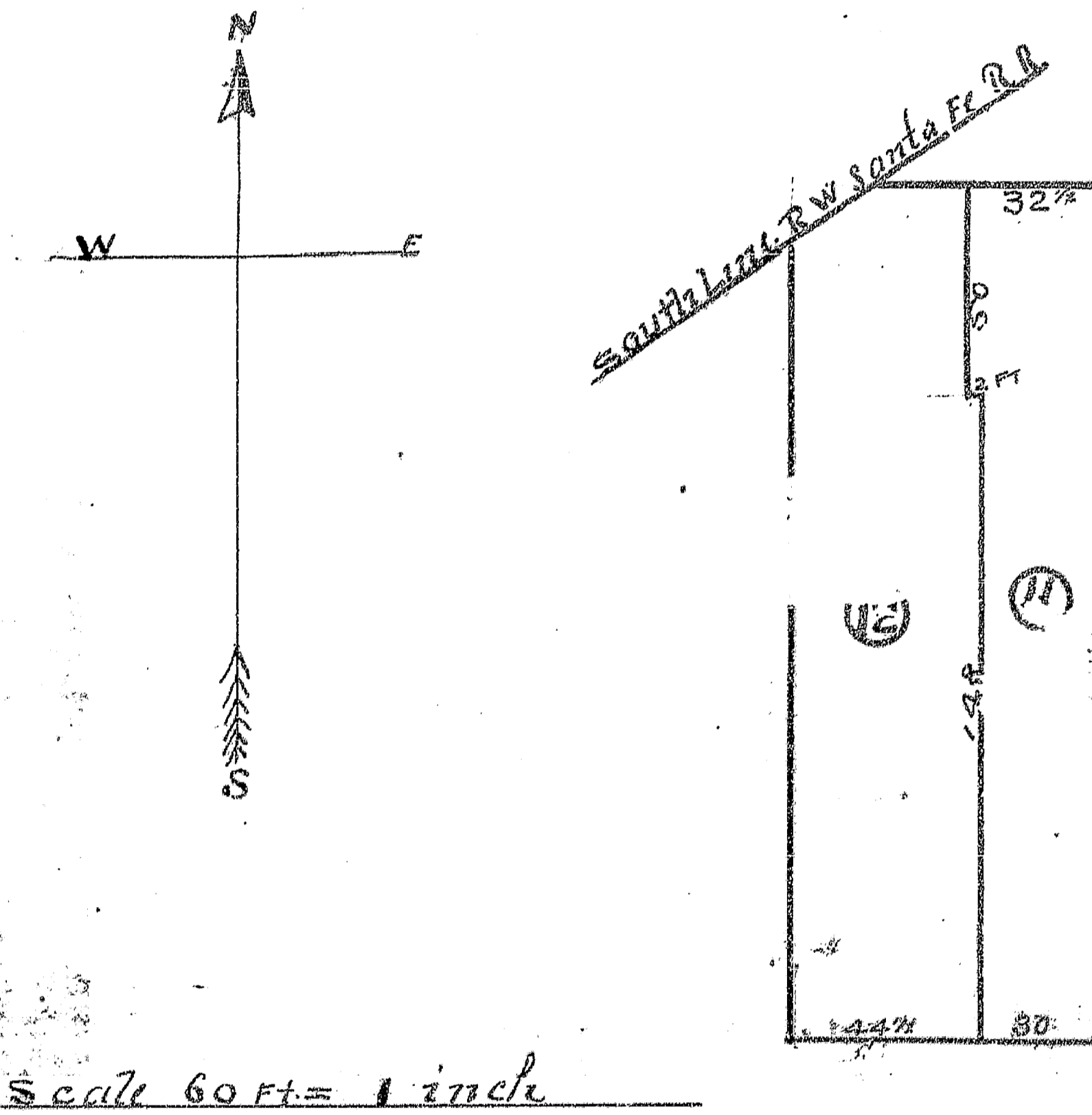
Approved by me, this 29th day of March, 1904.

FRANK L. ADAMS, County Clerk.

# REVENUE PLAT 1904

OF

A SUBDIVISION OF SUB. LOTS 4 & 5 OF SUBDIVISION  
OF ORIGINAL LOTS 1, 2, 3 & 4 OF BLOCK OF ORIGINAL PLAT  
OF GALESBURG KNOX CO. ILL.



STATE OF ILLINOIS, }  
 Knox County, } ss. I, C. S. RICHEY, County Surveyor of said Knox County, do hereby certify that  
 the foregoing and annexed is a true and correct Plat and description of Lands advertised for Survey and Platting  
 by the County Clerk, as taken from the records of Knox County, and by measurements and survey, as provided for  
 in Sections 62 and 63, Chapter 120, Revised Statutes of Illinois, 1903.  
 Dated this 29th day of March, 1904.

C. S. RICHEY, County Surveyor.

Approved by me, this 29th day of March, 1904.

FRANK L. ADAMS, County Clerk.